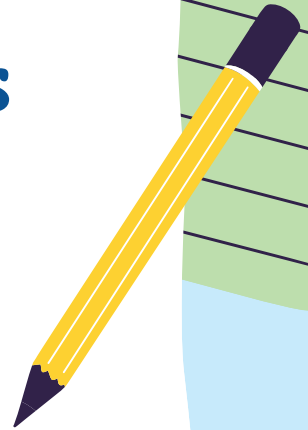
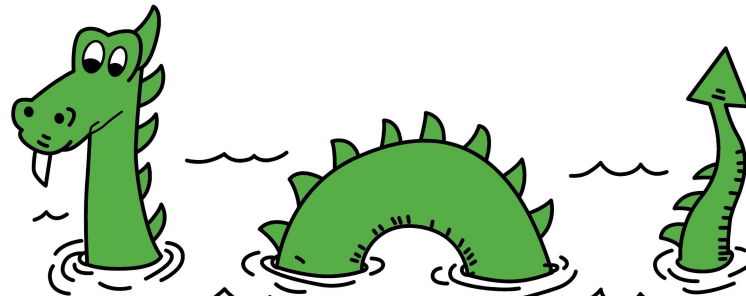




Island Heights Grade School

Spring 2022 NJSLA Scores

Presented October 12, 2022





**English Language
Arts
2021-2022**

3rd Grade: English Language Arts

NJSLA SCORE	21-22 3rd Grade (4th) (13 students)		18-19 3rd Grade (13 students)	
1 <i>Did Not Meet Yet</i>	2	15.4%	0	0%
2 <i>Partially Met</i>	0	0%	0	0%
3 <i>Approached</i>	2	15.4%	1	7.7%
4 <i>Met</i>	8	61.5%	10	76.9%
5 <i>Exceeded</i>	1	7.7%	2	15.4%
≥4 <u>TOTAL</u> Met or Exceeded Expectations	9	69.2%	12	92.3%

4th Grade: English Language Arts

NJSLA SCORE	21-22 4th Grade <i>(5th)</i> <i>(16 students)</i>		18-19 4th Grade <i>(19 students)</i>	
1 <i>Did Not Meet Yet</i>	0	0%	0	0%
2 <i>Partially Met</i>	1	6.3%	1	5.3%
3 <i>Approached</i>	5	31.3%	2	10.5%
4 <i>Met</i>	6	37.5%	8	42.1%
5 <i>Exceeded</i>	4	25%	8	42.1%
≥4 <u>TOTAL</u> Met or Exceeded Expectations	10	62.5%	16	84.2%

5th Grade: English Language Arts

NJSLA SCORE	21-22 5th Grade (6th) (17 students)		18-19 5th Grade (22 students)	
1 <i>Did Not Meet Yet</i>	1	5.9%	0	0%
2 <i>Partially Met</i>	2	11.8%	0	0%
3 <i>Approached</i>	2	11.8%	4	18.2%
4 <i>Met</i>	8	47.1%	15	68.2%
5 <i>Exceeded</i>	4	23.5%	3	13.6%
≥4 <u>TOTAL</u> Met or Exceeded Expectations	12	70.6%	18	81.8%

6th Grade: English Language Arts

NJSLA SCORE	21-22 6th Grade (7th) (11 students)		18-19 6th Grade (23 students)	
1 <i>Did Not Meet Yet</i>	1	9.1%	0	0%
2 <i>Partially Met</i>	0	0%	0	0%
3 <i>Approached</i>	1	9.1%	2	8.7%
4 <i>Met</i>	8	72.7%	15	65.2%
5 <i>Exceeded</i>	1	9.1%	6	26.1%
≥4 <u>TOTAL</u> Met or Exceeded Expectations	9	81.8%	21	91.3%

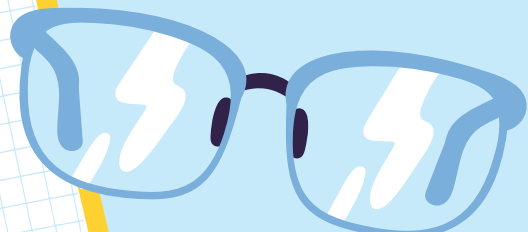
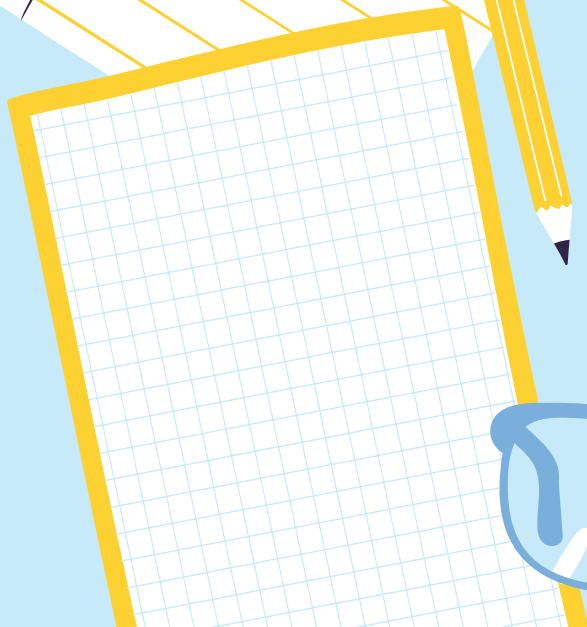
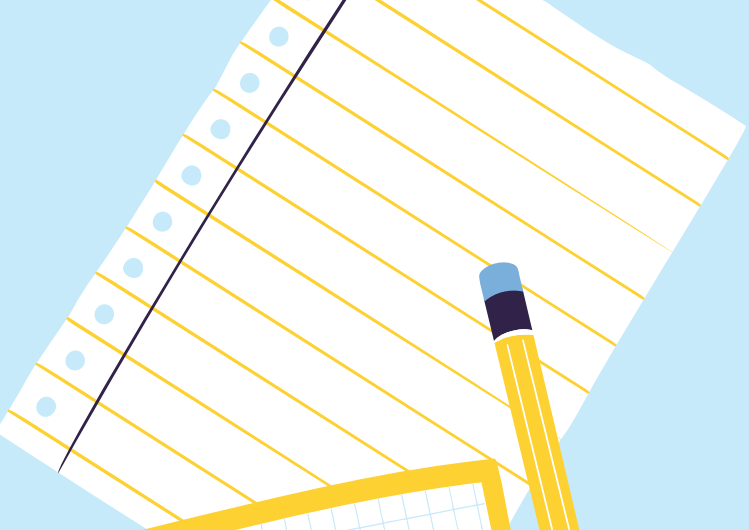
2021-2022 English Language Arts Percentages

GRADE	STATE <i>Met or Exceeded Expectations ≥ Level 4</i>	ISLAND HEIGHTS <i>Met or Exceeded Expectations ≥ Level 4</i>
3	42.4%	69.2%
4	49.4%	62.5%
5	49.6%	70.6%
6	47.5%	81.8%

2021-2022 English Language Arts Average Scale Score

GRADE	STATE	ISLAND HEIGHTS
3	740	763
4	746	764
5	748	766
6	746	764

Mathematics 2021-2022



3rd Grade: Mathematics

NJSLA SCORE	21-22 3rd Grade (4th) (13 students)		18-19 3rd Grade (13 students)	
1 <i>Did Not Meet Yet</i>	1	7.7%	0	0%
2 <i>Partially Met</i>	1	7.7%	0	0%
3 <i>Approached</i>	1	7.7%	2	15.4%
4 <i>Met</i>	5	38.5%	9	69.2%
5 <i>Exceeded</i>	5	38.5%	2	15.4%
≥4 <u>TOTAL</u> Met or Exceeded Expectations	10	76.9%	11	84.6%

4th Grade: Mathematics

NJSLA SCORE	21-22 4th Grade (5th) (16 students)		18-19 4th Grade (19 students)	
1 <i>Did Not Meet Yet</i>	0	0%	0	0%
2 <i>Partially Met</i>	1	6.3%	0	0%
3 <i>Approached</i>	4	25%	5	26.3%
4 <i>Met</i>	10	62.5%	9	47.4%
5 <i>Exceeded</i>	1	6.3%	5	26.3%
≥4 <u>TOTAL</u> Met or Exceeded Expectations	11	68.8%	14	73.7%

5th Grade: Mathematics

NJSLA SCORE	21-22 5th Grade (6th) (17 students)		18-19 5th Grade (22 students)	
1 <i>Did Not Meet Yet</i>	3	17.6%	0	0%
2 <i>Partially Met</i>	1	5.9%	4	18.2%
3 <i>Approached</i>	5	29.4%	5	22.7%
4 <i>Met</i>	8	47.1%	9	40.9%
5 <i>Exceeded</i>	0	0%	4	18.2%
≥4 <u>TOTAL</u> Met or Exceeded Expectations	8	47.1%	13	59.1%

6th Grade: Mathematics

NJSLA SCORE	21-22 6th Grade (7th) (11 students)		18-19 6th Grade (23 students)	
1 <i>Did Not Meet Yet</i>	1	9.1%	1	4.3%
2 <i>Partially Met</i>	0	0%	4	17.4%
3 <i>Approached</i>	2	18.2%	6	26.1%
4 <i>Met</i>	6	54.5%	8	34.8%
5 <i>Exceeded</i>	2	18.2%	4	17.4%
≥4 <u>TOTAL</u> Met or Exceeded Expectations	8	72.7%	12	52.2%

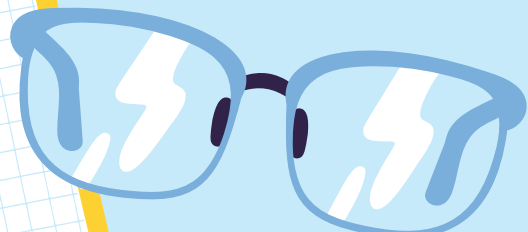
2021-2022 Mathematics Percentages

GRADE	STATE <i>Met or Exceeded Expectations</i> ≥ Level 4	ISLAND HEIGHTS <i>Met or Exceeded Expectations</i> ≥ Level 4
3	45.5%	76.9%
4	39.4%	68.8%
5	36.1%	47.1%
6	31.3%	72.7%

2021-2022 Mathematics Average Scale Score

GRADE	STATE	ISLAND HEIGHTS
3	745	771
4	740	760
5	736	746
6	733	759

Science 2021-2022



5th Grade: Science

NJSLA SCORE	21-22 5th Grade (6th) (17 students)		18-19 5th Grade (22 students)	
1 <i>Below Proficient</i>	3	17.6%	2	9.1%
2 <i>Near Proficiency</i>	6	35.3%	11	50%
3 <i>Proficient</i>	8	47.1%	6	27.3%
4 <i>Advanced Proficiency</i>	0	0%	3	13.6%
≥3 <u>TOTAL</u> Met or Exceeded Expectations	8	47.1%	9	40.9%

2021-2022 Science Percentages



GRADE	STATE <i>Met or Exceeded Expectations</i> ≥ Level 3	ISLAND HEIGHTS <i>Met or Exceeded Expectations</i> ≥ Level 3
5	25.5%	47.1%



2021-2022 Science Average Scale Score



GRADE	STATE	ISLAND HEIGHTS
5	163	185



Results By Demographics



Grades 3-6 English Language Arts: **By Gender**

NJSLA SCORE	Female	Male
1 <i>Did Not Meet Yet</i>	4.3%	8.8%
2 <i>Partially Met</i>	0%	8.8%
3 <i>Approached</i>	13%	20.6%
4 <i>Met</i>	65%	44.1%
5 <i>Exceeded</i>	17.4%	17.6%
≥4 <u>TOTAL</u> Met or Exceeded Expectations	82.4%	61.7%

Grades 3-6 Mathematics: **By Gender**

NJSLA SCORE	Female	Male
1 <i>Did Not Meet Yet</i>	0%	14.7%
2 <i>Partially Met</i>	4.3%	5.9%
3 <i>Approached</i>	26.1%	17.6%
4 <i>Met</i>	60.9%	44.1%
5 <i>Exceeded</i>	8.7%	17.6%
≥4 <u>TOTAL</u> Met or Exceeded Expectations	69.6%	61.8%

Grades 5 Science: By Gender

NJSLA SCORE	Female	Male
1 <i>Below Proficient</i>	16.7%	18.2%
2 <i>Near Proficiency</i>	50%	27.3%
3 <i>Proficient</i>	33.3%	54.5%
4 <i>Advanced Proficiency</i>	0%	0%
≥3 <u>TOTAL</u> Met or Exceeded Expectations	33.3%	54.5%

Grades 3-6 English Language Arts: **By Ethnicity**

NJSLA SCORE	Black/ African American	Hispanic or Latino	White	Two or More Races
1 <i>Did Not Meet Yet</i>	0%	0%	8.3%	0%
2 <i>Partially Met</i>	100%	0%	4.2%	0%
3 <i>Approached</i>	0%	33.3%	16.7%	0%
4 <i>Met</i>	0%	66.7%	50%	100%
5 <i>Exceeded</i>	0%	0%	20.1%	0%
≥4 <u>TOTAL</u> Met or Exceeded Expectations	0%	66.7%	70.1%	100%

Grades 3-6 Mathematics: **By Ethnicity**

NJSLA SCORE	Black/ African American	Hispanic or Latino	White	Two or More Races
1 <i>Did Not Meet Yet</i>	0%	16.7%	8.3%	0%
2 <i>Partially Met</i>	100%	0%	4.2%	0%
3 <i>Approached</i>	0%	16.7%	22.9%	0%
4 <i>Met</i>	0%	50%	50%	100%
5 <i>Exceeded</i>	0%	16.7%	14.6%	0%
≥4 TOTAL Met or Exceeded Expectations	0%	56.7%	64.6%	100%

Grades 5 Science: By Ethnicity

NJSLA SCORE	Black/ African American	Hispanic or Latino	White	Two or More Races
1 <i>Below Proficient</i>	0%	50%	15.4%	0%
2 <i>Near Proficiency</i>	100%	0%	38.5%	0%
3 <i>Proficient</i>	0%	50%	46.2%	100%
4 <i>Advanced Proficiency</i>	0%	0%	0%	0%
≥3 <u>TOTAL</u> Met or Exceeded Expectations	0%	50%	46.2%	100%

Grades 3-6 English Language Arts: Students with Disabilities

NJSLA SCORE	IEP	504
1 <i>Did Not Meet Yet</i>	20%	20%
2 <i>Partially Met</i>	13.3%	0%
3 <i>Approached</i>	33.3%	20%
4 <i>Met</i>	26.7%	60%
5 <i>Exceeded</i>	6.7%	0%
≥4 <u>TOTAL</u> Met or Exceeded Expectations	33.4%	60%

Grades 3-6 Mathematics: Students with Disabilities

NJSLA SCORE	IEP	504
1 <i>Did Not Meet Yet</i>	33.3%	0%
2 <i>Partially Met</i>	6.7%	20%
3 <i>Approached</i>	33.3%	20%
4 <i>Met</i>	20%	60%
5 <i>Exceeded</i>	6.7%	0%
≥4 <u>TOTAL</u> Met or Exceeded Expectations	26.7%	60%

Grades 5 Science: Students with Disabilities

NJSLA SCORE	IEP	504
1 <i>Below Proficient</i>	40%	0%
2 <i>Near Proficiency</i>	20%	0%
3 <i>Proficient</i>	40%	0%
4 <i>Advanced Proficiency</i>	0%	0%
≥3 <u>TOTAL</u> Met or Exceeded Expectations	40%	0%

Grades 3-6 English Language Arts: Other Demographics

NJSLA SCORE	Economically Disadvantaged	Non-Economically Disadvantaged
1 <i>Did Not Meet Yet</i>	100%	5.4%
2 <i>Partially Met</i>	0%	5.4%
3 <i>Approached</i>	0%	17.9%
4 <i>Met</i>	0%	53.6%
5 <i>Exceeded</i>	0%	17.9%
≥4 <u>TOTAL</u> Met or Exceeded Expectations	0%	71.5%

Grades 3-6 Mathematics: Other Demographics

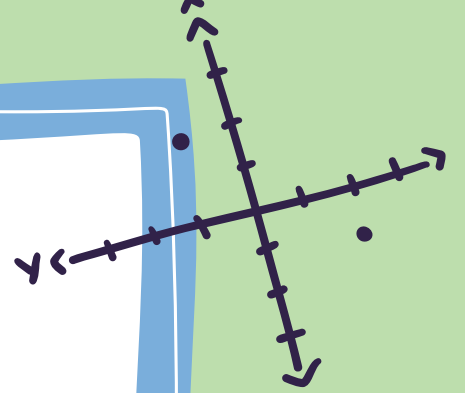
NJSLA SCORE	Economically Disadvantaged	Non-Economically Disadvantaged
1 <i>Did Not Meet Yet</i>	100%	7.1%
2 <i>Partially Met</i>	0%	5.4%
3 <i>Approached</i>	0%	21.4%
4 <i>Met</i>	0%	51.8%
5 <i>Exceeded</i>	0%	14.3%
≥4 <u>TOTAL</u> Met or Exceeded Expectations	0%	66.1%

Grades 5 Science: Other Demographics

NJSLA SCORE	Economically Disadvantaged	Non-Economically Disadvantaged
1 <i>Below Proficient</i>	0%	17.6%
2 <i>Near Proficiency</i>	0%	35.3%
3 <i>Proficient</i>	0%	47.1%
4 <i>Advanced Proficiency</i>	0%	0%
≥3 <u>TOTAL</u> Met or Exceeded Expectations	0%	47.1%

Spring 2022 Grades 3-6
NJSLA:
English Language Learners

0% ELLs



$axbxc =$
 $ab - bc$

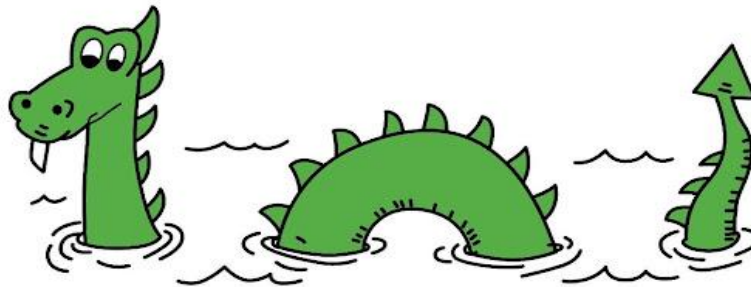
21-22 NJSLA Highlights

- ★ IHGS scored above state averages in ALL subject areas.
- ★ As expected, the majority of NJSLA scores were lower than the 18-19 test scores.
- ★ 21-22 6th Grade Mathematics scores are higher than 18-19 scores.
- ★ 21-22 5th Grade Science scores are higher than 18-19 scores.
- ★ 1 student scored a perfect score of 850 in mathematics!
- ★ Students that scored a 1, 2, or 3 and do not receive special education are eligible for basic skills in our STARS program.
- ★ Possibly restart our NJSLA morning test prep that we had in 19-20.
- ★ Encourage teachers to utilize NJSLA data and reports to help their students grow in 22-23.
- ★ New Experience for our students! Last group to take the NJSLA was last year's 6th Grade (7th) when they were 3rd Graders!
We will use this data as our new baseline for the NJSLA.





Thank you!



Sea Devils

$$\sqrt{\frac{3}{4}}$$

