

# **Island Heights Grade School**

## **2011/2012 Budget**

### **Public Hearing**



**Loren B. Fuhring, Superintendent  
Frank J. Frazee, CPA, Business Administrator  
Lil Brendel, Board Secretary**

*The Island Heights Board of Education is urging community residents to vote in the 2011 Annual School Election on Wednesday, April 27.*

*The local school board plays an essential role in the education that the children receive and on April 27 voters will have the opportunity to select the men and women who will set the policies under which our community's schools will operate. Voters will also weigh in on the proposed school district budget.*

*Remember that citizens cannot be heard if they don't exercise their right to vote.*

*The school board plays an essential role in education by:*

*Setting policies in areas such as classroom instruction, student discipline, and the use of school facilities. These policies guide the school administration in managing the education program.*

- *The school board approved the local district's proposed budget for presentation to the voters.*
- *Negotiates employee contracts, and approves the hiring of teachers, administrators and other staff.*

*Voters unable to go to the polls on April 27 may apply for absentee ballots, which are available at the county clerk's office. Residents can apply to their county clerk for absentee ballots by mail. County clerks must receive mail applications by April 20.*

*Polling information is contained in sample ballots mailed to all registered voters prior to the election.*

# PROPOSED 2011-2012 SCHOOL BUDGET DOCUMENT

## **School Budget Election on April 27, 2011:**

On April 27, 2011 when Island Heights' voters go to the polls, they will be voting on the proposed school budget for next year. The election of board members will also be on the ballot.

## **Election of School Board Members:**

Residents of Island Heights will elect three school board members on April 27, 2011. This year there are two-three year positions and one one-year position. The two candidates for the three-year positions are Douglas Camburn and Melissa Drew.

## **Budget Preparation:**

The Island Heights Board of Education in collaboration with the district administration is committed to "providing materials, experiences and an environment," that is conducive to all students learning as stated in the district's mission statement. All have agreed upon, a priorities guide in which items are incorporated into the budget that administration ultimately presents to the board. This year's priorities are:

- **Maintaining programs and services for all students.**
- **Preparing a budget with less than one cent tax increase.**



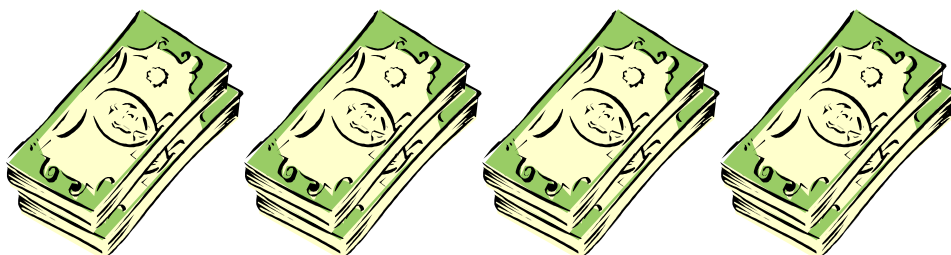
# The Proposed Budget:

## Revenue Sources:

The revenue that funds our school district budget comes from several sources: local property taxes are the primary source; other sources include federal grants, state aid and fund balance appropriations. This year \$65,000 was appropriated from fund balance toward tax relief. The grant and aid money varies from year to year. The chart below shows that approximately 89% of the district's budget is funded by local property taxes.

## REVENUE SOURCES FOR THE 2011-12 BUDGET

Local Tax Levy	\$1,631,883
State Aid	105,208
Fund Balance	65,000
Tuition	21,000
Miscellaneous	4,100
Grants	39,895
Educational Job Aid	6,103
Debt Service Fund Balance	18
Debt Service Tax Levy	86,910
TOTAL REVENUE	\$1,960,117



**Appropriations:**

The operating budget and debt service for 2011-2012 school year totals \$1,960,117. The chart below shows the major expenditure categories in relation to the total budget. The cost of instruction, which includes all educational costs, is the largest portion of the budget.

**APPROPRIATIONS FOR THE 2011-12 BUDGET BY MAJOR CATEGORY**

Instruction and Employee Benefits	\$1,350,414
Maintenance	259,816
Administration	192,713
Transportation	28,369
Food Service	0
Capital Outlay	1,982
Grant Expenditures	39,895
Debt Service	86,928
<b>TOTAL APPROPRIATION</b>	<b>\$1,960,117</b>

### **What Does the School District Budget Fund?**

Looking at the individual expenditure categories is one way to understand what is included in the proposed budget. Below is a list of the major expenditure categories, the number to the right represents the dollar increase/(decrease) from the 2011-12 revised budget.

#### **Instruction – Regular: \$739,172**

**\$(12,033)**

Instruction includes teacher's salaries, substitute salaries, paraprofessionals, textbooks, teaching supplies and equipment items that cost less than \$2,000.

#### **Instruction Special Education: \$ 154,728**

**\$ 36,520**

Includes salaries for special education teachers and paraprofessionals who are assigned to work with special needs students or in special education classrooms. Funds for supplies and adaptive equipment are also included

#### **Instruction – Basic Skills: \$28,366**

**\$ 620**

Includes funds for teaching salaries and instructional supplies.

#### **Other Support Services: \$9,054**

**\$ (23,422)**

Includes salaries for the K-6 support services in the district.

#### **Attendance and Health Services: \$40,162**

**\$ (300)**

Includes salaries and supplies for school nurses, as well as, expenses for student physical and other related costs. Also, included here is attendance secretary salaries.

#### **Other Support Services: \$76,273**

**\$48,980**

Includes fees and supplies for speech, occupational and physical therapists.

#### **Child Study Team: \$35,577**

**\$(7,423)**

Services provided by child study team members, including the school psychologist, social worker and learning consultants. Included in this account are salaries, supplies and contracted services for psychological and neurological exams.

#### **Curriculum and Instruction: \$5,500**

**\$ 0**

Activities primarily for assisting instructional staff in planning, developing and evaluating the process of providing learning experience for students. Included in this account are expenses for staff development.

#### **Educational Media: \$5,000**

**\$ 3,600**

Educational Media Services include school library and audiovisual services. School library books, periodicals, resources and salaries are included in the account.

**General Administration: \$112,520****\$ 5,148**

This account includes expenses associated with establishing and administering policy. These include salaries, election expenses, legal services, auditing services, along with communications and other contracted services.

**Central Services and Administrative Information Technology: \$80,193****\$ 4,289**

Includes all expenses associated with paying, transporting, exchanging and maintaining goods and services for the district. These include budgeting services, receiving and disbursing services, financial and property accounting, purchasing, printing, publishing and duplication. Included in this account are salaries and supplies for the business office.

**Operations and Maintenance: \$259,866****\$ (48,645)**

Activities concerned with keeping the facilities open, comfortable and safe for use and keeping the grounds, building and equipment in effective working condition. This includes the supervision of operation and maintenance services, salaries, operations, repairs, replacement and cleaning of buildings. Also, included here are the school's utilities.

**Student Transportation: \$28,369****\$ (9,046)**

Included are transportation expenses for special education students. Also included is transportation for private schools and aid-lieu payments.

**Unallocated Benefits: \$256,532****\$(48,489)**

This account includes health benefits, workman's compensation, social security, pension and tuition reimbursement for staff.

### **Academic Achievements and Opportunities for the students in the Island Heights Grade School District.**

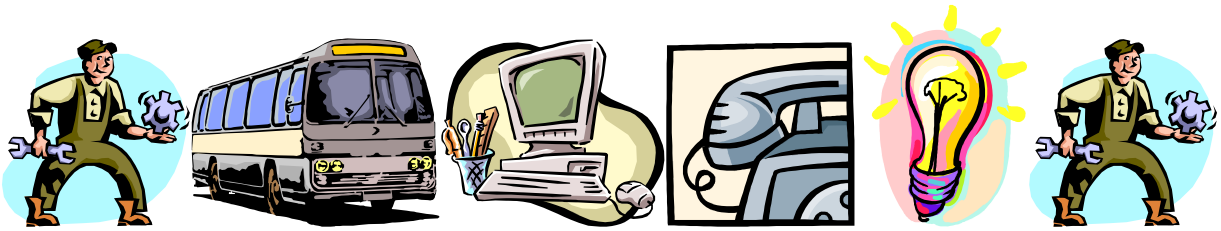
- Above average test scores
- Enrichment Programs
- Laptop Cart including Smartboard Technology
- Small Class Size
- Counselor
- Spanish Program for All students
- Full Day Kindergarten
- Special Education Programs
- Preschool Handicapped Program
- After School Tutoring Programs
- After School Clubs
- Dedicated and Caring Professional Staff
- Clean, Safe Buildings
- School open on evening and weekends

### **Shared Services**

One way the district reduces costs is by sharing services with schools or businesses. Below is a list of the shared services in which the district participates:

- Shared services with Boro of Island Heights
  - Tree trimming
  - Sidewalk repair
  - Playground upkeep
  - Snow removal
  - Recyclables pick-up
  - Concert & assembly
- MOESC Transportation – Special Education
- Use of NJ Hire website
- Lunches purchased from Central Regional
- Child Study Team
- Custodial Services with Berkeley Township
- Insurance
- Busing Central Regional School District
- Maintenance and Buildings and Grounds provided by Central Regional
- Student teachers from Georgian Court University
- Physician Toms River Regional





## Expenses vs. State Aid – Is the state keeping their end of the deal?

### Education Costs

Education costs are increasing and the state aid for education has increased. Below are the actual budget costs for the district over the past five years, along with the state aid received.

Year	Budget	State Aid
2011/12	\$1,833,294	\$105,208
2010/11	\$1,875,424	\$ 85,439
2009/10	\$1,976,424	\$184,165
2008/09	\$1,937,651	\$184,165
2007/08	\$1,972,938	\$171,536

### Local Tax Levy

The local tax levy has had to increase over the past five years. Below is a listing of the tax levy including debt service portion.

Year	Local Tax Levy
2011/2012	\$1,718,793
2010/2011	\$1,688,834
2009/2010	\$1,685,604
2008/2009	\$1,675,014
2007/2008	\$1,615,455

***As you can see the local tax levy has increased, however due to staff attrition, fiscal management and responsibility, the school budget has been below the increase in inflation in total over the last five years.***

## **What is the Tax Impact?**

### **General Operating Budget**

The total budget decrease is \$42,130. The tax impact for the general operating budget and debt service has less than a penny impact on the tax rate per \$100 assessed value.

### **Debt Service**

This year the district will continue to pay the principal and interest on the bonds financed for the Island Heights Grade School.

### **Annual Budget Election – When & Where?**

The annual budget election is scheduled for Wednesday, April 27, 2011. The polls will be open from 2:00 p.m. to 9:00 p.m. This year you will be asked to approve a tax levy of \$1,631,883.

To participate in the annual school elections, a citizen must be a registered voter in his or her municipality.

Voters unable to go to the polls on April 27 may apply for absentee ballots, which are available at the county clerk's office. Residents can apply to their county clerk for absentee ballots by mail. County clerks must receive mail applications by April 20.

Polling information is contained in sample ballots mailed to all registered voters prior to the election.

